

# CONTACT

NEWS FOR FRIENDS OF THE WEST PARK HOSPITAL FOUNDATION

## BUILDING LONG-TERM CARE

For the thousands of Ontario senior citizens waiting for a long-term care bed, the Ministry of Health's (MOH) award of a licence last November to operate a 200-bed long-term care centre at West Park Hospital was good news. Responding to a serious shortage of long-term care beds, the MOH awarded long-term care licences to Ontario health care organizations as part of an eight-year, \$1.2 billion strategy to create 20,000 new long-term care beds and expand the home care system in Ontario.

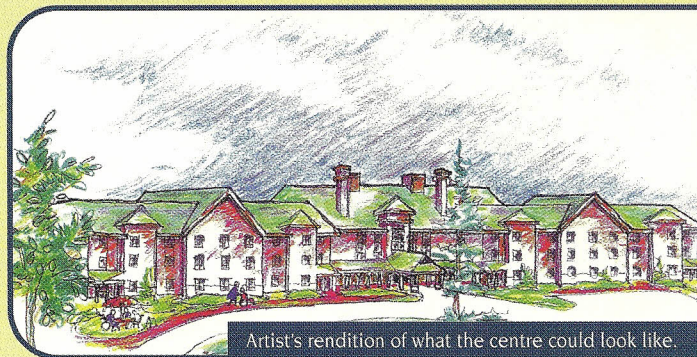
"There have been few long-term care beds created in Ontario in the last 10 years," says Diana Noel, director, Planning and Business Development. "This has created a bottle-neck of seniors waiting at home or in acute care hospitals for special nursing care. The addition of these new long-term care beds is a first step to ease the pressure."

The new long-term care centre at West Park Hospital will be built and operated by Extendicare Canada Inc, which has provided long-term care for nearly 30 years across Canada. West Park will own the licence and its Board of Governors will be accountable for the centre's quality of care. The centre will have an annual operating budget of \$7 million and cost about \$18 million to build. The new facility will be built on the site where the Prittie building now stands.

"The fact that West Park Hospital has been awarded a license to operate a long-term care centre is confirmation of the Ministry of Health's recognition of our expertise, sensitivity and client-centred approach," says Barry Monaghan, president and chief executive officer.

"Today there just aren't enough long-term beds to serve people 75 and older and who need 24 hour nursing care," notes Ms. Noel. "For example, in York region there are only 47 long-term care beds for every 1000 people aged 75 and older. This is much lower than the provincial average of 107 beds per 1000 people who are 75 and older."

The hallmark of West Park's new facility

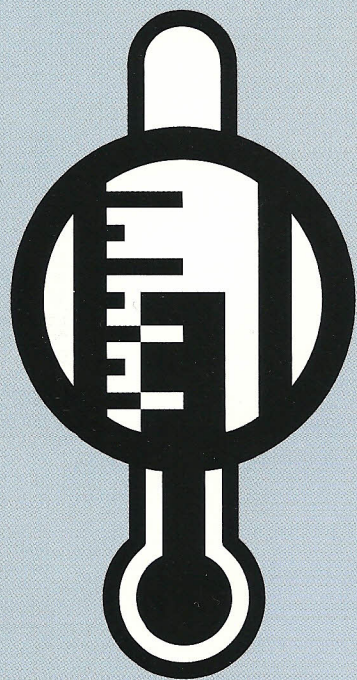


Artist's rendition of what the centre could look like.

will be its home-like design. The centre will be divided into 10 home areas that will accommodate 20 residents each. And, like a home, each area will have its own dining room and recreation space in addition to the residents' private accommodation. Residents will also be able to enjoy the park-like setting that is the pride of West Park Hospital.

The first residents of the long-term care centre will be welcomed sometime in late 2000.

In the meantime, responding to the need for immediate long-term care beds, West Park Hospital was awarded a license to operate 22 temporary or interim long-term care beds. The interim long-term care beds opened February 4, 1999 and will operate for the next couple of years while permanent long-term care facilities, such as the centre at West Park, are constructed.



# THANK YOU!

HERE ARE THE  
TOTAL DONATIONS RECEIVED  
AS OF DECEMBER 31, 1998.

**1,743 gifts  
totalling  
\$966,944\*.**

\* includes investment income

GRANTS AND SPECIAL PROJECTS  
GOAL FOR 1998/99

**\$1,276,536**